



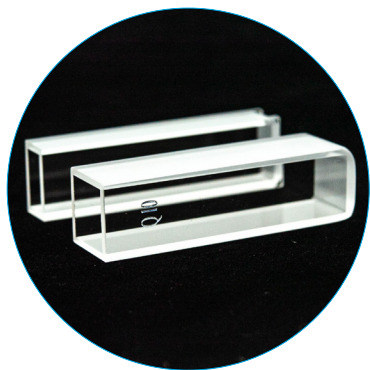
Chrom4 Quartz Cuvettes (cells)

Spectroscopic analysis are commonly carried out in solutions and the absorbance of a solution is directly proportional to the path length and concentration of the absorbing species. Thus, for a fixed path length, UV/Vis spectroscopy can be used to determine not only the presence, but also the concentration of the absorber in a solution.

Why choose a Chrom4 Cuvette?

Choosing the proper cell or cuvette is very important. And even though plastic and glass cells may be more affordable, they are not compatible with all applications.

The chemical structure of quartz is stronger than glass making it able to handle a larger range of chemicals that would melt or damage a glass cuvette. Quartz cells not only provide more durability than plastic or glass, but also excel at transmitting UV light. For wavelengths in the UV range below approx. 300 nm, cuvettes made from quartz glass, which provide sufficient transparency in this range, must be used.



Chrom4 Quartz Cuvettes

- High quality Quartz cuvettes
- Various path lengths available
- Compatible for wavelengths ranging from 190 to 2500 nm
- Chemically resistant and more durable

Chrom4 manufacturing has many years of experience in the production of accessories for UV-Vis-NIR spectroscopy to meet all standard procedures found in analytical, clinical and research laboratories.

Ordering Information - Quartz Cells

For Agilent™, Buck Scientific, Hitachi, Jasco, Shimadzu, Thermo Scientific and PerkinElmer

Part No. (each)	Description	External Dimensions (mm)			Internal Dimensions (mm)		Volume μL
		W	L	H	W	L	
Rectangular Cells							
C4QC-1	1 mm UV Quartz Cell	12.5	3.5	45	10	1	449
C4QC-2	2 mm UV Quartz Cell	12.5	4.5	45	10	2	898
C4QC-5	5 mm UV Quartz Cell	12.5	7.5	45	10	5	2245
C4QC-10	10 mm UV Quartz Cell	12.5	12.5	45	10	10	4490
C4QC-20	20 mm UV Quartz Cell	12.5	22.5	45	10	20	8980
C4QC-50	50 mm UV Quartz Cell	12.5	52.5	45	10	50	22450
C4QC-100	100 mm UV Quartz Cell	12.5	102.5	45	10	100	44900

All Spectrophotometer Cells are supplied with PTFE lid