



Violet™ Polymeric SPE



Violet MCX
Sulfonated PS-DVB phase
Pore size: 80 Å
100% Water Wettable
Ion-Exchange capacity: ~0.6 mEq/g
pKa <1



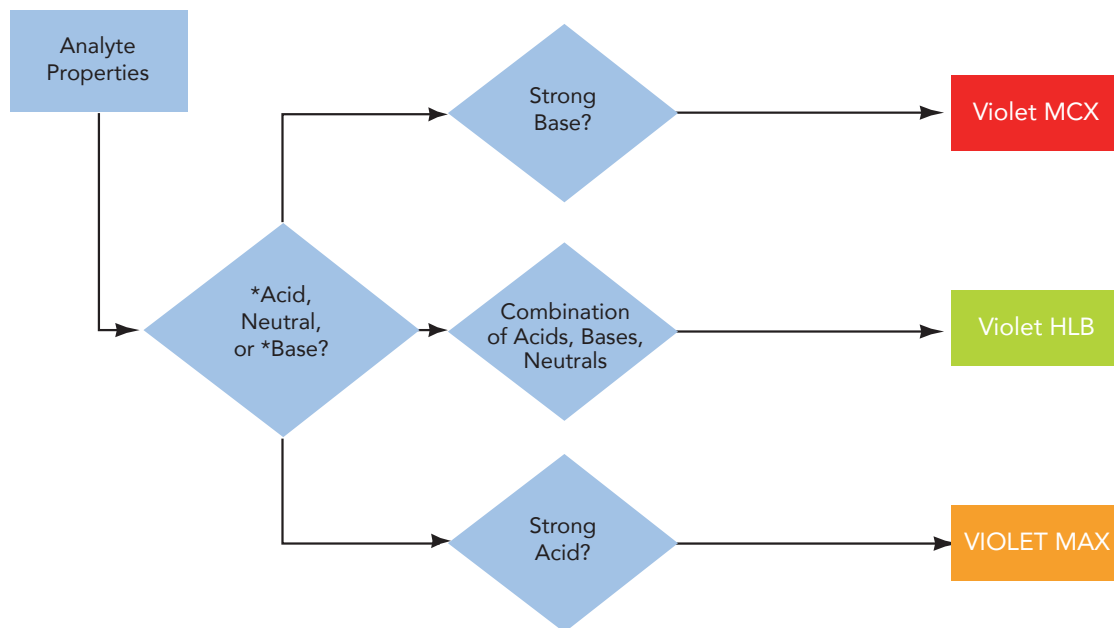
Violet HLB
100% PS-DVB RP phase
Pore size: 80 Å
100% Water Wettable
Surface area: ~700 m²/g



Violet MAX
100% PS-DVB phase
Aminated
Pore Size: 85 Å
100% Water Wettable
1.5 mEq/g

- Available in 35-45 µm
- Available in various cartridge sizes and 96-well plate formats

Violet™ Sorbent Selection Guidelines



Violet™ Ordering Information

Violet HLB cartridges

Part Number	Description	Qty (Box)
VO34460	VIOLET HLB 10mg/1mL	100
VO34461	VIOLET HLB 30mg/1mL	100
VO34462	VIOLET HLB 30mg/3mL	100
VO34446	VIOLET HLB 60mg/3mL	100
VO34264	VIOLET HLB 100mg/3mL	100
VO34445	VIOLET HLB 200mg/6mL	30
VO34266	VIOLET HLB 500mg/6mL	30

Violet HLB 96-well plates

Part Number	Description	Qty (Box)
VO96341	VIOLET HLB 96-WELL 10mg/1mL	1
VO96343	VIOLET HLB 96-WELL 30mg/1mL	1
VO96345	VIOLET HLB 96 WELL 60mg/1mL	1
VO96347	VIOLET HLB 96 WELL 30mg/2mL	1
VO96348	VIOLET HLB 96 WELL 60mg/ 2mL	1



Violet MCX cartridges

Part Number	Description	Qty (Box)
VO54460	VIOLET MCX 10mg/1mL	100
VO54461	VIOLET MCX 30mg/1mL	100
VO54462	VIOLET MCX 30mg/3mL	100
VO54446	VIOLET MCX 60mg/3mL	100
VO54264	VIOLET MCX 100mg/3mL	100
VO54445	VIOLET MCX 200mg/6mL	30
VO54266	VIOLET MCX 500mg/6mL	30

Violet MCX 96-well plates

Part Number	Description	Qty (Box)
VO96541	VIOLET MCX 96-WELL 10mg/1mL	1
VO96543	VIOLET MCX 96-WELL 30mg/1mL	1
VO96545	VIOLET MCX 96 WELL 60mg/1mL	1
VO96547	VIOLET MCX 96 WELL 30mg/2mL	1
VO96548	VIOLET MCX 96 WELL 60mg/ 2mL	1



Violet MAX cartridges

Part Number	Description	Qty (Box)
VO64264	VIOLET MAX, 100mg/3mL, 40µm	100
VO64265	VIOLET MAX, 200mg/3mL, 40µm	100
VO64266	VIOLET MAX, 500mg/6mL, 40µm	30
VO64445	VIOLET MAX, 200mg/6mL, 40µm	30
VO64446	VIOLET MAX, 10mg/1mL, 40µm	100
VO64460	VIOLET, MAX, 10mg/1mL, 40µm	100
VO64461	VIOLET, MAX, 30mg/1mL, 40µm	100
VO64462	VIOLET MAX, 30mg/3mL, 40µm	100

Violet MAX 96-well plates

Part Number	Description	Qty (Box)
VO96641	VIOLET MAX, 10mg/1mL, 40µm	1
VO96643	VIOLET MAX, 30mg/1mL, 40µm	1
VO96645	VIOLET MAX, 60mg/1mL, 40µm, Removable	1
VO96647	VIOLET MAX, 30mg/2mL, 40µm	1
VO96648	VIOLET MAX, 60mg/2mL, 40µm	1



Would you like to receive further information? Please contact:

www.chrom4.com • info@chrom4.com

